

The following is Bonwin hotel wireless electronic door lock maintenance system, the operator can do this work normally.

The works including Controller box, Room management, System parameter setting, Devices management and control, Staff management, Network lock function card management, VIP membership management, Rights management, Operator management etc..

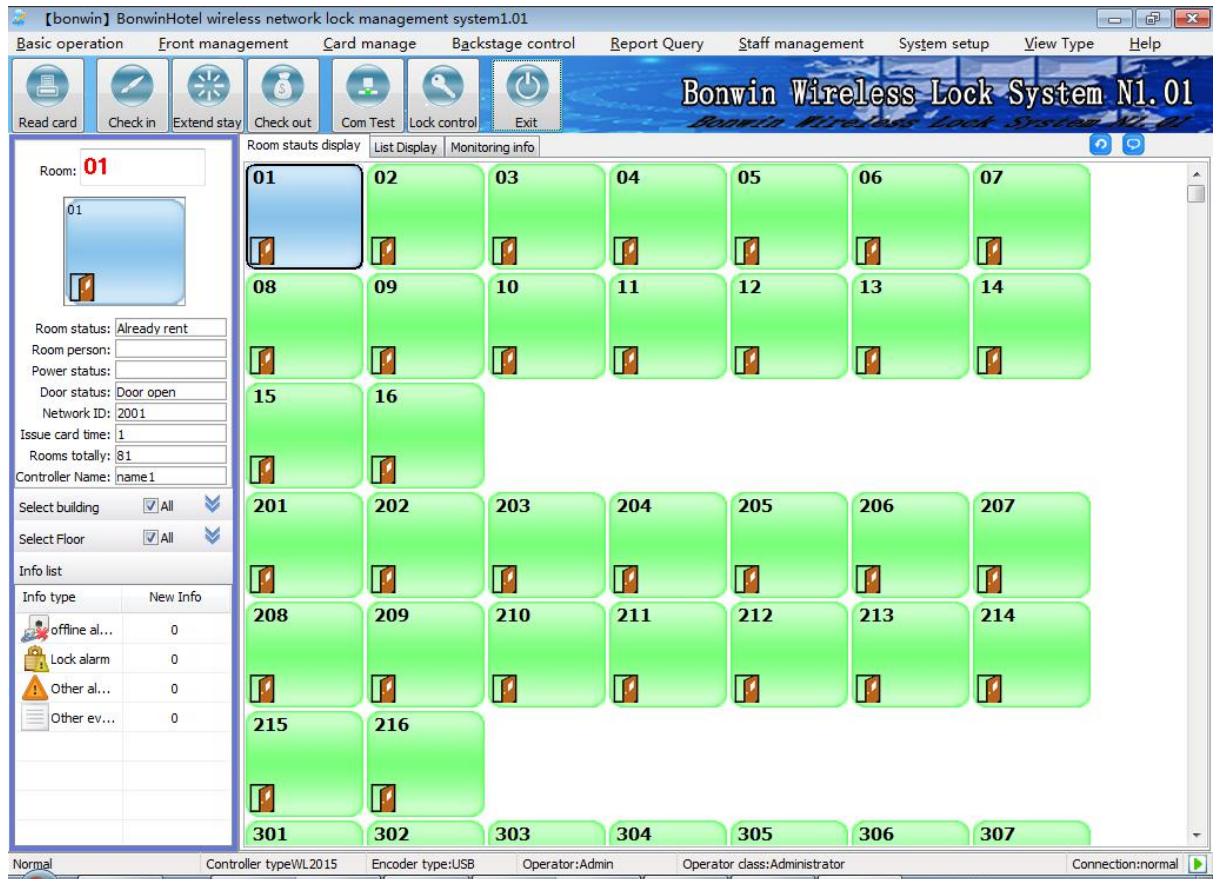
Double click on the desktop or start-> all programs-> Bonwin wireless network lock management system, find the 1.01 icon to open the login window, as shown in picture 1, login to the system main window, as shown in picture 2.



1

### **The main window of the management system**

several parts as shown in picture 2, including Menus, Quick buttons, Room information, Room filtering, Info tips, Room diagram, Room list, Information list, Status bar.



2

- Top area ---it is the menu and button part, you can open all kinds of operation and the setup windows at here.
- Upper left part ----listed the info of the selected room, input the room number and press enter, can assigned the room fast.
- Middle left part-----Room Filtering tools, the operator can input the building or floor to select the room number, then monitoring the room info
- Left bottom area---- it is the information prompted part, from here you can see the number of info which is still had not be processing, click on a line of information list can see details about the selected type information in the middle.
- Middle part: room information, room status display, list display, room info list.
- Bottom part---you can see the:  
Software status, client computer, server computer connect status and other info.